

ENGINEERING
DEGREE IN
AGRONOMY

SPECIALISATION

RURAL TERRITORIAL
MANAGEMENT



Implement and run development projects in rural areas



BORDEAUX
SCIENCES
AGRO

General Information on the Specialisation

This specialisation trains students for professions relating to the socioeconomic development of rural areas that cover a wide range of activities (rural tourism and agro-tourism; assistance, advice and support for start-ups in rural areas, stakeholder advice to develop local circuits, development project elaboration, rural heritage management, etc.).

With the involvement of a diverse group of people (professionals, researchers, etc.) and a wide range of human and social sciences (geography, economics, sociology, law, etc.), this specialisation provides students with the knowledge and skills needed by anyone working with and implementing rural development projects (management skills, advisory skills, development skills, mapping skills, etc.).

Educational Programme for the Specialisation

PRE-SPECIALISATION SEMESTER

COMMON CORE

Economics of Companies and Territories

13 weeks common core work for both specialisations (rural territorial management and management of agricultural companies), 6 weeks of which spent on projects with training in project management

PRE-SPECIALISATION INTERNSHIP (3 MONTHS)

SPECIALISATION SEMESTER

SUSTAINABLE MANAGEMENT OF RURAL AREAS

22 weeks, of which 10 weeks on projects (2 projects) and 12 weeks organised into 3 class units

INTERNSHIP SEMESTER

JUNIOR ENGINEER INTERNSHIP (6 MONTHS)

The Pluses

- > Possibility of obtaining a dual Engineering + Master's degree in 'Quality, Origins and Territorial Development' from the University of Bordeaux Montaigne
- > Pooled coursework with the University of Bordeaux Montaigne and the University of Bordeaux
- > Acquisition of project management, implementation and personnel management skills
- > Two professional projects (10 weeks, 50% of the educational programme) with immediate application of lessons
- > 60% of outside speakers from the professional world (lawyers, project managers, consultants, etc.) and research
- > A diverse range of rural management approaches in terms of disciplines (economics, geography, sociology, law, etc.) and subject matters (human and social sciences, economics and finance, land tenure, the environment, etc.)

Curriculum

The coursework, organised in units, covers three major thematic fields:

- > Public policy and rural development (rural policy, LEADER & INTERREG programmes, environmental policy, etc.)
- > Rural territorial management (land tenure management, environmental management, financial management, territorial diagnostics, etc.)
- > Economic activities and management of rural areas (tourism and agritourism, short circuits and local circuits, etc.)

Career Prospects

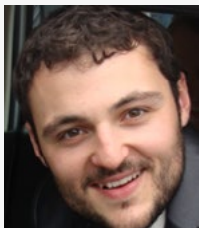
- **The jobs prospects after completion of this specialisation are diverse:**

- > Rural territorial development engineer
- > Project officer for development projects applied to rural areas (LEADER programmes, INTERREG programmes, local circuit development, social and solidarity economy development, etc.)
- > Advisor and/or start-up support agent
- > Land advisor
- > Tourism project officer

- **The types of structures with job openings are also very diverse:**

Territorial governments (municipalities, departments, regions, municipality groups), professional agricultural bodies, SAFER, project areas (natural parks, countries), development organisations, consultancy firms, associations, etc.

Témoignage



Xavier LAURIERE, Graduating Class of 2009

Head of a European LEADER programme for a territorial government in the Loir-et-Cher region

"I run the European LEADER programme in a territorial government in the Loir-et-Cher region. It finances innovative local development projects in rural areas, networking public and private stakeholders in the area.

I had chosen this specialisation in order to run projects related to sustainable development or territorial planning. It allowed me to better understand the

synergies that emerge among rural territorial stakeholders and identify the specific conditions for their projects to succeed.

I did my end-of-study internship with the Agence de Services et de Paiement, the French national body in charge of paying out the majority of grants for the rural world. I mastered public financing tools and this allowed me to be hired by a local government to run the LEADER programme.

More than just the project management skills it provided, this specialisation allowed me to integrate directly into the socio-territorial dynamics of local projects supported by the programme."

A welcoming and dynamic campus...

- 5 student housing halls offering 350 units
- Numerous student associations and clubs
- A wide range of sporting activities
- 17 modern languages offered

A higher education and research facility:

- 12 mixed research units
- 3 research transmission units
- ISO 9001 certification for engineering degrees
- Active sustainable development process

France's leading region in agricultural value added



- World leader in protected designation of origin wines
- France's leading region in quality-certified and/or certified origin production
- Home to the largest planted forest in Europe



Bordeaux: a UNESCO World Heritage Site

- High university and scientific potential
- Lively cultural and associative life
- Strong economic and tourism activities

Bordeaux: an Ideal Geographic Location

- 55 km from the beaches in Lacanau
- 3 hours and 15 minutes from the ski slopes in the Pyrenees
- 2 and a half hours from Spain

Contact

Nathalie CORADE

Tel : +33(0)5 57 35 07 78

nathalie.corade@agro-bordeaux.fr



MINISTÈRE
DE L'AGRICULTURE
DE L'AGROALIMENTAIRE
ET DE LA FORÊT

